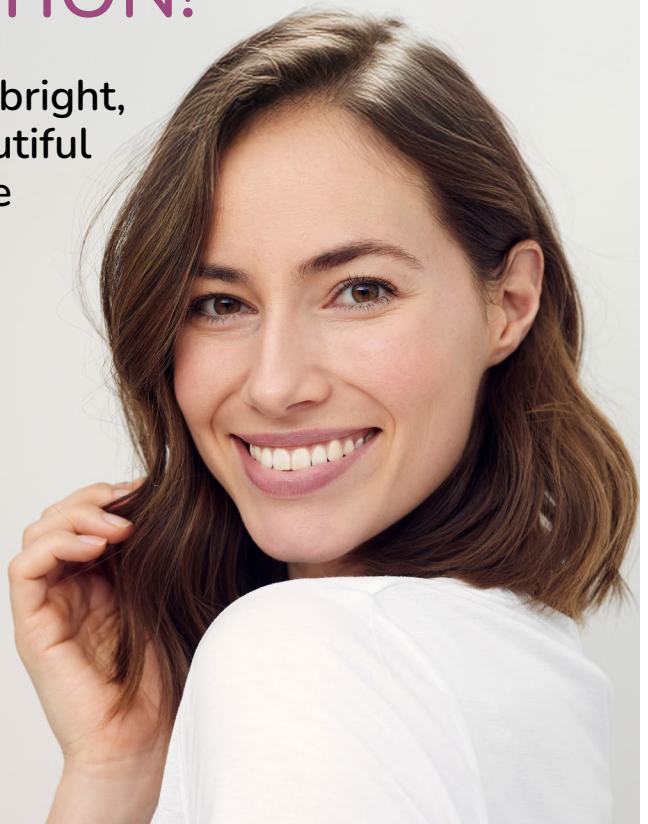


# YOUR SMILE DESERVES LASTING PROTECTION!

Keep your smile bright,  
healthy and beautiful  
for years to come  
with our tailored  
Aftercare Plan.



Please turn over to see the full range of exclusive benefits available.

**HARWOOD**  
DENTAL CARE

Caring for your smile

21 Longsight | Harwood | Bolton BL2 3HS  
01204 304568 | [info@harwooddentalcare.co.uk](mailto:info@harwooddentalcare.co.uk) | [www.harwooddentalcare.co.uk](http://www.harwooddentalcare.co.uk)

## Why join our Aftercare Plan?

Investing in your smile is just the beginning; maintaining it is what keeps it looking perfect. Our Aftercare Plan is designed to:

<p><b>Protect your investment -</b> you've made a significant commitment to your smile, ongoing after care ensures it stays its best for years to come.</p>	<p><b>Reduce long-term costs -</b> regular reviews help us detect and prevent issues early, avoiding the need for costly repairs or further treatments.</p>	<p><b>Sustain your results with confidence -</b> we monitor and maintain your composite bonding, retainers and overall oral health.</p>	<p><b>Professional support and peace of mind -</b> our team takes responsibility for keeping your smile on track, so you can feel confident knowing nothing is overlooked.</p>
---	---	---	--

## What's included in your membership?

	Plan 1	Plan 2	Plan 3	Plan 4
Number of cosmetic dental health examinations per year*	1	1	1	1
Number of EMS Airflow® hygiene appointments per year*	1	2	-	-
Number of extended EMS Airflow® hygiene appointments per year**	-	-	1	2
Small x-rays	✓	✓	✓	✓
<b>Monthly cost**</b>	<b>£18.33</b>	<b>£27.08</b>	<b>£21.25</b>	<b>£32.92</b>

Plans 3 and 4 are designed for patients who have 10 or more teeth with composite bonding.

## Benefits of joining our Aftercare Plan:

- Bespoke cosmetic checks with Dr Jonny Stevens
- Professional hygiene treatments for brighter, cleaner teeth
- Warranty on stains or marks on composite treatments
- 10% discount on repairs of composite fractures or chips
- 50% off up to five Boutique Whitening top-ups each year
- Free emergency consultations (usually £50)
- Eligibility to request access to our Worldwide Dental Emergency Assistance Scheme\*\*

**With regular visits with Dr Jonny Stevens and our expert hygiene team, you can confidently show off your smile every day.**

**Ready to protect your smile?**  
Call us on 01204 304568 or  
email us at [info@harwooddentalcare.co.uk](mailto:info@harwooddentalcare.co.uk)



\* The provision of dental health examinations and hygiene visits is subject to receipt of the required consecutive monthly payments.

\*\* An initial administration fee of £9.50 will be collected with your first payment only.

\*\*\* Documentation relating to our Privacy Notice and the Worldwide Dental Emergency Assistance Scheme, including assistance levels, limitations and exclusions is available to view online at [www.scheme.wdeas.co.uk/patients](http://www.scheme.wdeas.co.uk/patients)